

2017 Annual Report

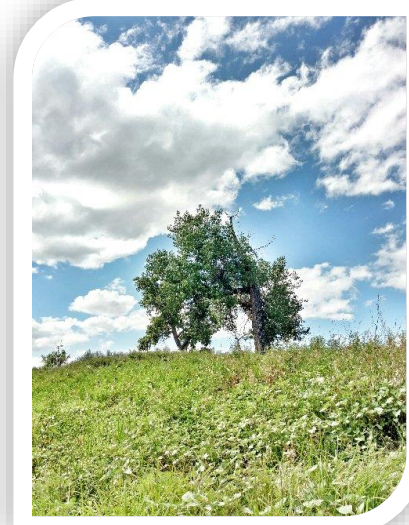


Phillips Conservation District
1120 Hwy 191 S, Ste 2
Malta, MT 59538
www.phillipsconservationdistrict.com
Jenifer.anderson@mt.nacdnet.net

Executive Summary

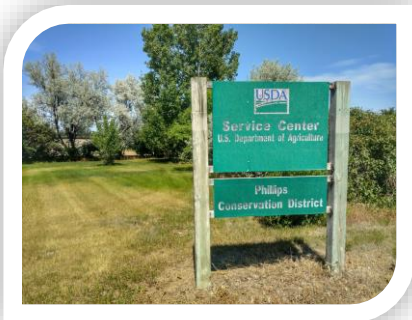
The Phillips Conservation District works to protect and conserve soil, water, farmland, rangelands, woodland, wildlife, energy and other renewable resources on private lands. The District is governed by a group of appointed and elected Supervisors who represent the residents of Phillips County.

Supervisors for the Phillips Conservation District include Chairman Bob Breipohl, Vice-Chairman Matt Simonson, Treasurer Gary Knudsen, Bill French, Paul Mortenson, Pat Anderson, Merrilyn Black; Associate Supervisor Hal DeBoer and Administrator Jenifer Anderson. Meetings are held the second Tuesday of each month at 1:00 p.m. in the USDA Building and are open to the public.



Services/District Business

Conservation Districts administer the 310 law, which requires a 310 permit for any activity that physically alters or modifies the bed or banks of a perennially flowing stream. Applications are available at the District office or on-line, and there is no charge for the permit.



The Conservation District works closely with **the Natural Resources Conservation Service (NRCS)**. Shilo Messerly is the NRCS District Conservationist.

Phillips CD houses the **SWCDMI/SGI Range Conservationist** position, Martin Townsend.

PCD purchased two **TDS/Salinity Water Meters** for testing livestock water quality. With the drought and declining water quality during the Summer of 2017, several landowners have been using the meters to test

their water.

The Phillips CD is a member of the **Milk River Watershed Alliance (MRWA)**, and serves as the employing agency and grant administrator. PCD sponsored a Watershed Management Grant to fund a Coordinator for the MRWA, as well as a DNRC 223 grant to fund an irrigation efficiency assessment along the Milk River.

PCD houses and supervises the Milk River Watershed Alliance **Big Sky Corps Member**.

District Supervisors were involved in the **Local Working Group** process to determine local priorities for EQIP funds.

District Administrator attended the 2017 **Statewide Administrator's Training** in Helena.

PCD participated in a panel at the **2017 Montana Bison Association Convention**, answering questions on land use ordinances.

The District continues to **offer for sale** conservation trees and shrubs, fabric and other planting products, and Phillips County landowner maps. Tree orders will be accepted until April 1st. Please feel free to stop by the office in the USDA building for further information or assistance.

Education/Community Outreach



Evergreen seedlings were distributed to students countywide by the District Supervisors and Administrator.

PCD provided awards for winners in the **Zortman Weed Pull**. PCD Administrator also participated in the Weed Pull.

The District displayed an **informational booth at Phillips County Ag Days in March**. A Phillips County landowner map was given out as a door prize.

Phillips Conservation District displayed an **informational booth at The Phillips County Fair**. A Milk River Watershed Alliance display of activities including recent tours, was displayed.

The District **website** can be viewed at www.phillipsconservationdistrict.com. Phillips Conservation District is also on Facebook.

The Phillips Conservation District **publishes quarterly newsletters**.

PCD made a cash donation towards the **Rancher's Stewardship Alliance** for their Phillips County celebration.

PCD sponsored a high school team from Malta to compete in the Envirothon competition.

Phillips Conservation District is a booster member of the Montana Range Days, and usually sponsors area youth to attend.

District Administrator, Jenifer Anderson presented on Conservation Districts and the Milk River Watershed Alliance in Montana at the **2017 Transboundary Grasslands Workshop** in Swift Current, Saskatchewan. The workshop was sponsored by the Alberta Prairie Conservation Forum and focused on community conservation groups on both sides of the Canadian/Montana border.

Phillips Conservation District Supervisors and Administrator **actively participate in the Charles M. Russell Community Working Group**. The group formed to enhance and preserve the ecological, economic and social well-being of the 6 Counties surrounding the Refuge. Participants in the group include agency representatives, landowners, grazing permittees, county commissioners, conservation districts, interest groups and engaged citizens. The group meets bi-monthly, rotating through the 6 counties

PCD/MRWA attended the **2017 Legislative Meet & Greet** in Helena, and displayed informational



booths at the Capitol Rotunda.

Tours/Workshops

PCD donated towards the **2017 River Rendezvous**, a tour of the aging St. Mary's Diversion facilities. The District also sponsored a DNRC mini-grant to pay for the buses for the tour. PCD Supervisors and Administrator attended the tour.

Phillips Conservation District, hosted a **Range Monitoring Workshop**, through Montana Rangelands Partnerships.

Phillips CD hosted an informational **Aquatic Invasive Species** meeting to gather local community input on the issue.